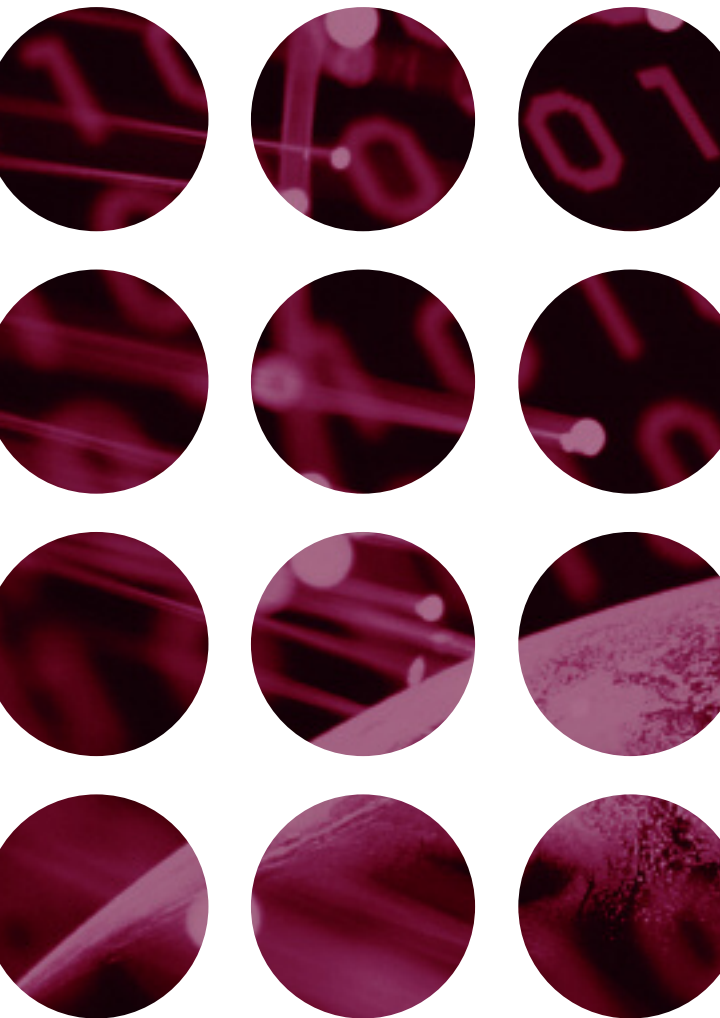


Patent Annuity Payment Services

*Accurately Track, Manage, and
Maintain Your Patent Portfolio*



Intelligent IP Management Requires Reliable Patent Annuity Services

Twenty years. The life of a patent is generally only twenty years and during that time you do everything you can to maximize the return on your innovation investment. An important part of maximizing this investment resides in properly managing your IP. Your fee payments must be made accurately and on time, or you may put that patent, or your entire portfolio, at risk.

MDC has the experience and knowledge to manage any size IP portfolio. As the world's largest and leading patent annuity payment provider, we've built our reputation over the past several decades by accurately tracking patent portfolios, securing sizable cost reductions, and making timely payments. We manage and maintain Local Rule changes on a global basis, as well as establish relationships with agents and patent offices in all jurisdictions, so you can concentrate on other tasks essential to growing your business. Hundreds of corporations and law firms have come to trust MDC to handle their patent annuity payments. See for yourself why, and then let us manage yours.



WHEN TO USE MDC'S PATENT ANNUITY SERVICES

- To manage your IP rights and their ongoing payments
- To audit acquired patents and their payment schedule
- To secure special care for specified patents
- To lock in guaranteed payment and foreign exchange rates
- To receive budget forecast reports and historical payment information relevant to your portfolio
- To ensure you never miss a payment or date for all the patents under your management

HOW YOU BENEFIT FROM MDC'S PATENT ANNUITY SERVICES

When you allow MDC to manage your annuity payments, you benefit from our:

- Rule and Fee Reliability
- Budget Forecasts
- Flexible Payment Reminders
- Flexible Currency Schedules
- Flexible Payment Terms
- VIP™ Services
- Patent Abandonment Audits
- Data Integrity Services
- Payment Auditing Services
- Public Data Audits
- Receipt/Certificate Tracking Services

MDC's Services Translate Into Real, Tangible Results For You and Your Client

- 1. Save time and money** as our team handles your patent payments and gets the lowest rates possible.
- 2. Have greater peace of mind** knowing your IP rights are being carefully and accurately managed—and that everything is paid on time and within budget.
- 3. Increase work productivity** in other areas as your time is freed by MDC taking on your payment service role.

MDC PATENT ANNUITY COST COMPARISON

This example assumes 2,000 non-U.S. annuity payments are made annually by XYZ Company.

| Cost Category | If You Pay Your Annuities on Your Own | If You Pay Your Annuities Through an Outside Firm | If MDC Pays Your Annuities |
|-----------------------------------|---------------------------------------|---|-------------------------------|
| Attorney Fees* | | 2,000 x \$200 = \$400,000 | |
| Agent Fees* | 2,000 x \$200 = \$400,000 | 2,000 x \$200 = \$400,000 | 2,000 x \$50^ = \$100,000 |
| Personnel to Manage Payments | 1.5 FTE x \$40,000 = \$60,000 | 1 FTE x \$40,000 = \$40,000 | .25 FTE x \$40,000 = \$10,000 |
| Incidentals | \$350/month = \$4,200 | \$175/month = \$2,100 | |
| Total | \$464,200 | \$842,100 | \$110,000 |
| Maximum Cost Savings w/MDC | | \$732,100 | |

* |
 ^ |

MDC Is the World's Leading And Largest Patent Annuity Payment Provider

RULE & FEE RELIABILITY

At MDC, we take a proactive approach to maintaining your IP rights. We continually monitor your portfolio against the latest Rules and promptly respond to changes; we secure the best rates, making payments for you prior to fee increases; and, we negotiate with

our network of agents on an ongoing basis to lock in the lowest rates. You benefit from our expertise and connections around the world.

We monitor your portfolio against the latest Rules changes and promptly respond to issues.

BUDGET FORECASTS

To aid in your budget planning process, MDC provides a fiscal year forecast so you can accurately plan your patent budget for the upcoming term. We also provide projections for the life of your entire portfolio, complemented by segmented forecasts by family, business unit, client, technology program, and more.

| Budget Number | Case Number | Filing Date | Fee Number | Estimated Fee | Due Date |
|---------------|-------------|-------------|------------|---------------|----------|
| 00000001 | 00000001 | 00000001 | 00000001 | \$ 100,000 | 00000001 |
| 00000002 | 00000002 | 00000002 | 00000002 | \$ 200,000 | 00000002 |
| 00000003 | 00000003 | 00000003 | 00000003 | \$ 300,000 | 00000003 |
| 00000004 | 00000004 | 00000004 | 00000004 | \$ 400,000 | 00000004 |
| 00000005 | 00000005 | 00000005 | 00000005 | \$ 500,000 | 00000005 |
| 00000006 | 00000006 | 00000006 | 00000006 | \$ 600,000 | 00000006 |
| 00000007 | 00000007 | 00000007 | 00000007 | \$ 700,000 | 00000007 |
| 00000008 | 00000008 | 00000008 | 00000008 | \$ 800,000 | 00000008 |
| 00000009 | 00000009 | 00000009 | 00000009 | \$ 900,000 | 00000009 |
| 00000010 | 00000010 | 00000010 | 00000010 | \$ 1,000,000 | 00000010 |

MDC's Budget Forecast report shows projected amounts due for the upcoming period.

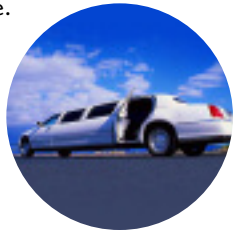
FLEXIBLE PAYMENT REMINDERS, CURRENCY SCHEDULES & PAYMENT TERMS

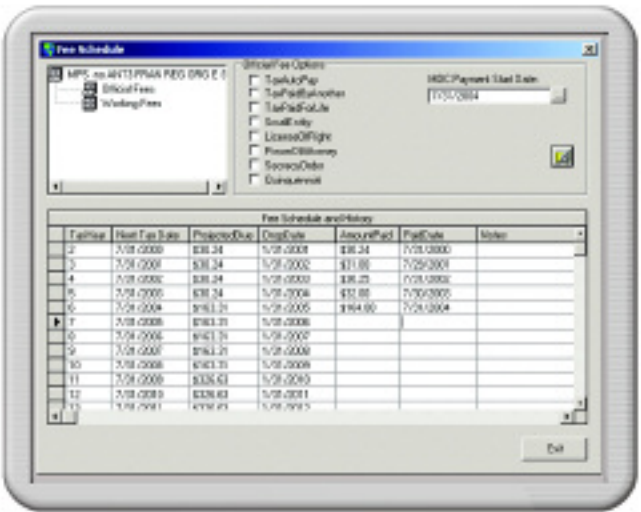
We work with you to meet your needs when it comes to your payment schedule and terms. Choose from monthly, quarterly, yearly, or ad hoc reminders and decision schedules. And, unlike any other annuity payment provider, we offer fixed or guaranteed exchange rates, as well as variable ones, in addition to arranging for your payments to be paid through a deposit account or via a final invoice. You decide what is best for you and your company, and we proceed accordingly.

Unlike any other annuity payment provider, we offer fixed or guaranteed exchange rates.

VIP™ SERVICES

Another MDC exclusive is our VIP service. You tell us which patents in your portfolio are the most critical to your business and which you would like handled with extra special attention. We assign one of our payment managers to continually audit their payment status. These rights will never be abandoned unless there is additional sign-off from specified executive management in your organization. Otherwise, they will always be maintained. Special management reports are also provided as part of this service.





Annuity fee schedule information shown in the Tax History tab.

PATENT ABANDONMENT AUDIT

MDC provides yet another exclusive service through its security audits for abandoned patents. Under this service, you receive a scheduled report of the abandoned cases from each data set that covers your entire portfolio or a specific group within it.

DATA INTEGRITY SERVICES

We carefully input, review, and cross check your IP data, paying close attention to the details. Through this proactive approach, we identify discrepancies in your records such as differences in agents, owners, numbers, dates, expired patents, and EPC grant notification, and work with you to preserve the integrity of your data.

PATENT AUDITING SERVICES

In addition to checking your data for discrepancies, MDC also continually analyzes new cases added to your portfolio with outstanding annuities and changed cases with annuities paid, notifying you of the results we find and following through accordingly to make sure your IP rights stay current and accurate.

PUBLIC DATA AUDIT

To further ensure the accuracy of your IP data, MDC audits your information against publicly filed and granted patent content from around the world. This helps us to identify required data that is incorrect or invalid before making any payments, and is yet another value-add service within our annuity payment program.

RECEIPT/CERTIFICATE TRACKING SERVICES

You will also know the status of your payments with the official confirmations we provide. You can receive a scanned copy of each receipt, in addition to the originals.

MANUAL AND STOP PAYMENTS

MDC can make manual payments, or stop payments, for you upon request. Simply fax or email us the patent details and we will promptly process your request.

Decision lists can be customized to meet your needs, by group, division, country, or in whatever way you require.

| Patent Number | Applying Number | Patent/Trade Secret No. | Owner Class / Division | Priority Information |
|---------------|-----------------|-------------------------|------------------------|----------------------|
| 00000001 | 00000001 | 00000001 | J. Jones | Section 10 |
| 00000002 | 00000002 | 00000002 | J. Jones | Section 10 |
| 00000003 | 00000003 | 00000003 | J. Jones | Section 10 |
| 00000004 | 00000004 | 00000004 | J. Jones | Section 10 |
| 00000005 | 00000005 | 00000005 | J. Jones | Section 10 |
| 00000006 | 00000006 | 00000006 | J. Jones | Section 10 |
| 00000007 | 00000007 | 00000007 | J. Jones | Section 10 |
| 00000008 | 00000008 | 00000008 | J. Jones | Section 10 |
| 00000009 | 00000009 | 00000009 | J. Jones | Section 10 |
| 00000010 | 00000010 | 00000010 | J. Jones | Section 10 |

MDC Pat 2004
 12/2004 04/2004
 Page 1 of 1

Spurrow International
 Decision List - 3rd Quarter 2004

mdc
 www.mdc.com

MDC's Convenient, Reliable Patent Payment Process

1 TRANSMIT DATA

To begin, we need your patent portfolio information. If you're an MDC IPMaster customer, you can easily extract data from IPMaster and have it sent to us for processing. If you use another docketing system, we offer a simple program that downloads your data in the format we need, so we can organize and manage your payments.

2 PATENT DECISION PACKAGE PREPARED

MDC creates a report of your patents, listing the cases due for payment and the cost of each one. These reports are customized to your needs, and may be featured by division or business unit, attorney and/or client, etc. We turn the Payment Decision Package over to you, so you can review problem reports and actions due, make payment decisions, and update your database.

3 REPORT REVIEW & INSTRUCTIONS

Next you need to review the report and return it to MDC with instructions and payment. You specify whether you want each right paid or not paid, and we follow through accordingly. For simplicity purposes, you can select the "Pay All" option and we will make the payments for all cases on the list.

4 VALIDATION/CONFIRMATION

MDC runs your information through a series of internal checks and balances to verify the information. We let you know if any relevant data is missing from your case details and make sure it meets the specific country requirements for payment processing. We then process your data per the instructions you gave us.

5 FINAL CONFIRMATION

Following payment, MDC creates a final confirmation list of all cases paid and provides you with receipt or acknowledgement of each payment.

Payment Services Summary: Timeline

This is a representative timeline of the patent services process we follow when managing your payments at MDC. This timeline may be modified or customized to meet your specific needs. Monthly schedules are also available.



Other Intelligent IP Management Solutions From MDC

MDC'S IPINSIGHT™ ONLINE ACCESS

We are nearing completion on the development of IPInsight. With this tool, you can go online and view not only a copy of your receipts, but also see actions we've taken and track our ongoing activity regarding the payments we manage for you or your client. IPInsight gives you convenient, fast access to the history of your IP payments, with the simple click of a button. Stay tuned for more information on this valuable, upcoming MDC service.



This is the main IPInsight screen, which lets you view all cases by the selected category.

ANNUITY BUDGETING MODULE

MDC also offers IP management software, IPMaster, with an Annuity Budgeting module. This allows you to work alongside our payment processing team as we oversee your data. Contact the regional office nearest you for more information.

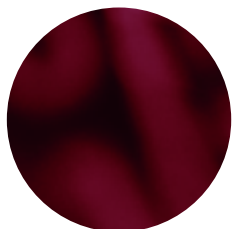
Getting Started

To find out more about MDC's patent annuity payment services, contact us at:

Email: info@mdcip.com

Telephone: +1.248.936.3737

We will gladly review your current portfolio and give you a free estimate regarding what it will cost for MDC to manage your patent rights.



Master Data Center

300 Franklin Center
29100 Northwestern Highway
Southfield, Michigan 48034-1095 USA
Telephone: +1.248.352.5810
Fax: +1.248.352.0754

50 Southwark Street
London SE1 1UN
United Kingdom
Telephone: +44 (0) 20.7940.4598
Fax: +44 (0) 20.7407.7226

Palaceside Bldg. 5F, 1-1-1 Hitotsubashi, Chiyoda-ku
Tokyo 100-0003, Japan
Telephone: +81 (3) 5218.6516
Fax: +81 (3) 5218.7840

MDC is a Thomson business
(NYSE: TOC; TSX: TOC).

www.mdcip.com

mdc^e
Intelligent IP Management