

Online Portfolio Access

Real-Time Patent Annuity Payment Reports, 24x7



MDC's Online Portfolio Access tool gives you immediate self-service access to your patent annuity payment information and lets you create custom views and reports.

MDC, the leader in patent annuity payment services, puts you in control with this powerful value-added tool for MDC customers that provides direct access to patent annuity payment information. With just an internet connection and a web browser, our Online Portfolio Access tool delivers the answers you need at any time, no matter where you are. You immediately know the status of your current patent payments and the estimated cost of your future payments.

Online Portfolio Access Highlights

- Easy-to-use web-based interface gives you instant access to view your patent annuity payment cases
- Customizable Payment Status Reports and Estimated Payment Projection Reports based on your designated criteria and sort orders
- Review and print MDC provided, standard payment reports
- Export data to use in Microsoft® Excel and further customize your reports

Online Portfolio Access Benefits

Direct Access to Your Cases

When you view information in Online Portfolio Access, you're looking at your current data as managed within MDC's internal patent payments processing systems.

Easy Sharing of Your Portfolio Data

Share patent annuity information with your colleagues or clients by printing reports or exporting your patent payment data directly from the Online Portfolio Access interface.

Cost-Effective Case Management

Your time is valuable and with Online Portfolio Access you'll spend less time tracking down the data you need and have more time to take action.

Safe and Secure Access

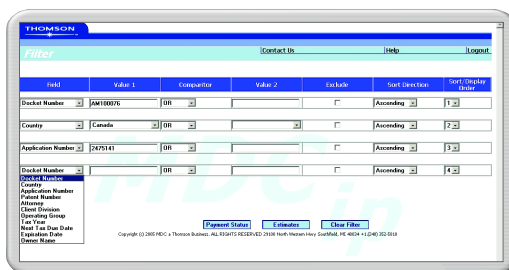
Microsoft® SQL Server and SSL connection ensure your docket data remains private and secure. And read-only access means that your data stays safe and can't be altered or changed by users through the Online Portfolio Access interface.

Intuitive Web Interface

As an MDC patent payment services customer, you'll receive an ID and password to login directly to the Online Portfolio Access website. An intuitive interface makes browsing, printing, and exporting patent payments data a breeze. And, online help is always there if you need it.

Easy-to-Use Report Filters

The Online Portfolio Access Filter screen lets you create a customized view of your payment records or future estimated payments. You can build simple or semi-complex queries by using one or more data field filters, up to four. And for each filter, you can choose from 11 different data fields – such as Docket Number, Country, Tax Due Date, Client Division, and more – plus any custom fields you may have in your locally installed IPMaster database. You can even choose how you want the information displayed by specifying a sort order for each data field filter.



The Filter Screen makes it easy to build simple or more complex filters of your payment records. As you select a field and enter a value, additional filter rows will display one at a time, up to four rows.

Getting Started

If you are a current MDC patent payments services customer, simply send your request for a login ID and password to: mdc.opa@thomson.com.

If you are not currently an MDC patent payments services customer find out more about MDC payment services by contacting: mdc.sales@thomson.com.

Payment Status Reports

Once you have set up your filter query, select "Payment Status" and the filtered records display right away on screen. You'll know exactly what actions have been taken on your patent annuity payments and the amount paid.

Estimated Payment Projection Reports

Or after building your query, select "Estimates" to view a Projection Payment Report. You'll see full case information including Tax Due Dates and Projected Amount to be paid. There's no more guesswork.

Print and Export Data Fast

Need a report in hand now? Print a report directly from the Payment Status or Projection Reports screen. All the data is automatically formatted in a printer-friendly format.

Want to work with your payment data a bit more, or re-arrange it into a custom report format? It's easy. From the Payment Status or Projection Report screen you can export your data to a Microsoft® Excel file. Open it right away—or choose to save the file, and work with it later.



Payment Status Reports and Projection Reports deliver current data.

From the Report screens, you can report or export data into Microsoft® Excel. "Close" returns you back to the filter screen where you can create another report.